

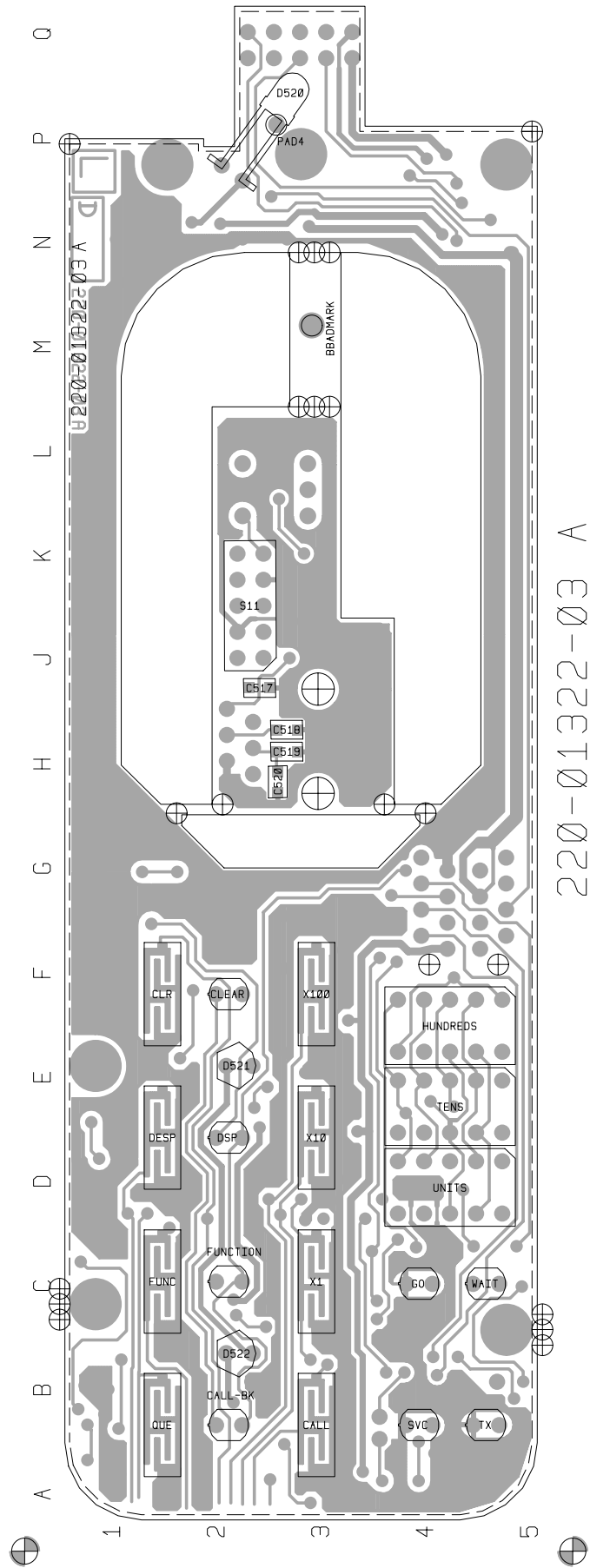
# 7.15 T2035 Control Head PCB

## T2035 Control Head Parts List (IPN 220-01322-03)

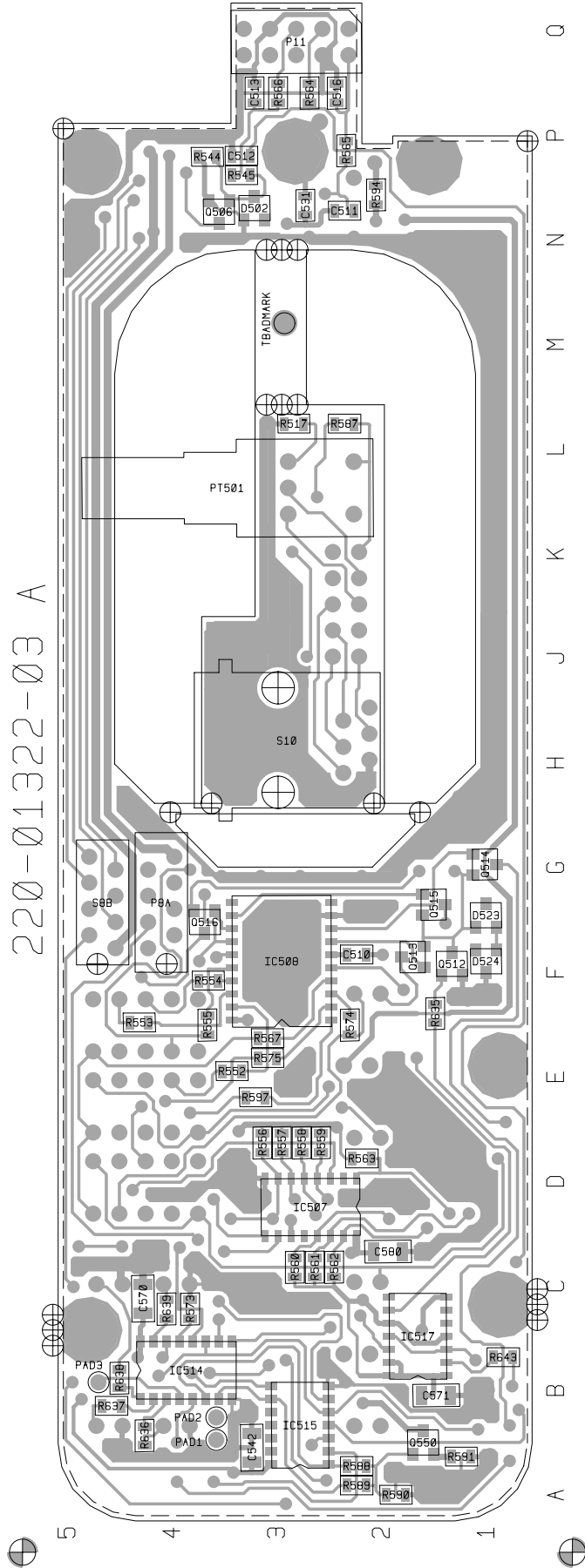
Ref	Var	IPN	Description	Ref	Var	IPN	Description
CLEAR		008-00010-25	(S) LED 2MM GREEN TOWER 3.8MM BASE ROH	R565		036-13470-00	RES M/F 0805 CHIP 470E 5%
CALLBK		008-00010-25	(S) LED 2MM GREEN TOWER 3.8MM BASE RO	R566		036-13470-00	RES M/F 0805 CHIP 470E 5%
C510		015-24150-08	CAP CER 0805 CHIP 1N5 10% X7R 50V	R567		036-13270-00	RES M/F 0805 CHIP 270E 5%
C511		015-25150-08	CAP CER 0805 CHIP 15N 10% X7R 50V	R573		036-14100-00	RES M/F 0805 CHIP 1K 5%
C512		015-24100-08	CAP CER 0805 CHIP 1N 10% X7R 50V	R574		036-13270-00	RES M/F 0805 CHIP 270E 5%
C513		015-24100-08	CAP CER 0805 CHIP 1N 10% X7R 50V	R575		036-13270-00	RES M/F 0805 CHIP 270E 5%
C516		015-24470-08	CAP CER 0805 CHIP 4N7 10% X7R 50V	R587		036-12100-00	RES M/F 0805 CHIP 10E 5%
C517		015-24330-08	CAP CER 0805 CHIP 3N3 10% X7R 50V	R588		036-14220-00	RES M/F 0805 CHIP 2K2 5%
C518		015-25100-08	CAP CER 0805 CHIP 10N 10% X7R 50V	R589		036-14470-00	RES M/F 0805 CHIP 4K7 5%
C519		015-24100-08	CAP CER 0805 CHIP 1N 10% X7R 50V	R590		036-14220-00	RES M/F 0805 CHIP 2K2 5%
C520		015-25220-08	CAP CER 0805 CHIP 22N 10% X7R 50V	R591		036-13150-00	RES M/F 0805 CHIP 150E 5%
C531		015-23150-01	CAP CER 0805 CHIP 150P 5% NPO 50V	R594		036-12100-00	RES M/F 0805 CHIP 10E 5%
C542		015-06100-08	CAP CER 1206 CHIP 100N 10% X7R 50V	R597		036-13270-00	RES M/F 0805 CHIP 270E 5%
C570		015-06100-08	CAP CER 1206 CHIP 100N 10% X7R 50V	R635		036-15100-00	RES M/F 0805 CHIP 10K 5%
C571		015-06100-08	CAP CER 1206 CHIP 100N 10% X7R 50V	R636		036-13560-00	RES M/F 0805 CHIP 560E 5%
C580		015-06100-08	CAP CER 1206 CHIP 100N 10% X7R 50V	R637		036-13560-00	RES M/F 0805 CHIP 560E 5%
				R638		036-13560-00	RES M/F 0805 CHIP 560E 5%
DVC		008-00010-21	(S) LED 2MM RED TOWER 3.8MM BASE ROHM SL	R639		036-13560-00	RES M/F 0805 CHIP 560E 5%
DSP		008-00010-25	(S) LED 2MM GREEN TOWER 3.8MM BASE ROHM	R643		036-15470-00	RES M/F 0805 CHIP 47K 5%
D502		001-10000-99	(S) DIODE SMD BAV99 DUAL SWTCH SNGLE IN				
D520		008-00010-15	(S) LED 3MM GREEN HLMP1585 DIFSD 2V3 6.	S8B		240-04020-50	SKT 8WAY 2ROW(2X4) PCB MTG MICROMATCH
D521		008-00010-15	(S) LED 3MM GREEN HLMP1585 DIFSD 2V3 6.	S10		240-04021-61	SKT TELEPHONE JACK 6-WAY SIDE ENTY 55516
D522		008-00010-15	(S) LED 3MM GREEN HLMP1585 DIFSD 2V3 6.				
D523		001-10000-99	(S) DIODE SMD BAV99 DUAL SWTCH SNGLE IN	TX		008-00010-21	(S) LED 2MM RED TOWER 3.8MM BASE ROHM SC
D524		001-10000-99	(S) DIODE SMD BAV99 DUAL SWTCH SNGLE IN	TENS		008-00020-29	(S) LED DISPLAY GREEN 7 SEG SINGLE HDSP
FUNCTI		008-00010-25	(S) LED 2MM GREEN TOWER 3.8MM BASE RO	UNITS		008-00020-29	(S) LED DISPLAY GREEN 7 SEG SINGLE HDS
GO		008-00010-25	(S) LED 2MM GREEN TOWER 3.8MM BASE ROHM	WAIT		008-00010-23	(S) LED 2MM YELLOW TOWER 3.8MM BASE ROH
HUNDS		008-00020-29	(S) LED DISPLAY GREEN 7 SEG SINGLE HDS				
IC507		002-10140-21	(S) IC MC14021BDR2 8BIT SHIFT REGSTR.S				
IC508		002-10144-99	(S) IC SMD 4*7 SEGMENT LED DRIVER				
IC514		002-74905-95	(S) IC SMD 74HC595 SHIFT REGISTER				
IC515		002-74900-04	(S) IC SMD 74HC04D HEX INVERTER BUFFD				
IC517		002-74907-40	(S) IC 74HC74 DUAL D-TYPE FLIP FLOP SO				
P8A		240-00026-23	CONN PADLE BD 8 WAY MICRO MATCH 0-215570				
P119		240-00020-87	HEADER 2X5 WAY RGT ANGLE PCB MTG MOLEX				
PT501		040-05100-20	SWITCH ROT 10K LOG POT 3A 16VDC SPST P				
Q506		000-10008-48	(S) XSTR SMD BCW60/BC848B215 NPN SOT23				
Q512		000-10008-48	(S) XSTR SMD BCW60/BC848B215 NPN SOT23				
Q513		000-10008-48	(S) XSTR SMD BCW60/BC848B215 NPN SOT23				
Q514		000-10008-48	(S) XSTR SMD BCW60/BC848B215 NPN SOT23				
Q515		000-10008-48	(S) XSTR SMD BCW60/BC848B215 NPN SOT23				
Q516		000-10008-48	(S) XSTR SMD BCW60/BC848B215 NPN SOT23				
Q550		000-10008-48	(S) XSTR SMD BCW60/BC848B215 NPN SOT23				
R517		036-10000-00	RES M/F 0805 CHIP ZERO OHM				
R544		036-15470-00	RES M/F 0805 CHIP 47K 5%				
R545		036-15470-00	RES M/F 0805 CHIP 47K 5%				
R552		036-13270-00	RES M/F 0805 CHIP 270E 5%				
R553		036-13270-00	RES M/F 0805 CHIP 270E 5%				
R554		036-13270-00	RES M/F 0805 CHIP 270E 5%				
R555		036-13270-00	RES M/F 0805 CHIP 270E 5%				
R556		036-15470-00	RES M/F 0805 CHIP 47K 5%				
R557		036-15470-00	RES M/F 0805 CHIP 47K 5%				
R558		036-15470-00	RES M/F 0805 CHIP 47K 5%				
R559		036-15470-00	RES M/F 0805 CHIP 47K 5%				
R560		036-15470-00	RES M/F 0805 CHIP 47K 5%				
R561		036-15470-00	RES M/F 0805 CHIP 47K 5%				
R562		036-15470-00	RES M/F 0805 CHIP 47K 5%				
R563		036-15470-00	RES M/F 0805 CHIP 47K 5%				
R564		036-13470-00	RES M/F 0805 CHIP 470E 5%				

## T2035 Control Head Mechanical & Miscellaneous Parts

IPN	Description	IPN	Description
220-01322-03	PCB T2033/35 DISPLAY BRD		
240-00020-54	PLUG 16 WAY 2X8 FLAT CABLE TERMN MICROMATCH		
240-00020-56	PLUG 8WAY 2ROW(2X4) CORD MTG IDC MICROMATCH		
240-04020-72	SKT HOUSING 2 WAY CORD MTG ULTREX		
240-04020-99	SKT RECEPTACLE SML WIRE CRIMP FOR ULTREX HOU		
250-00010-19	SPKR A3M2520 C/W RUBBER SEALING RING		
301-00001-05	ADAPTOR FRT PNL T2000 SII		
304-07035-00	LIGHT SPREADER A2M2531 BUTTONS T2000 FM1/TR1		
311-01042-01	KNOB A3M2530 T2000 S11		
311-03080-01	KEYPAD T2035 SII INTERNATIONAL		
312-01057-01	LENS T2035 SII GREEN DISPLAY		
316-06496-01	PNL FRT SCR N T2035 SII		
349-00010-22	SCREW NO 4X3/8 PAN POZI PLASTITE		
349-00010-24	SCREW #4X5/8 PLASTITE PAN POZI		
356-00010-01	TAG SOLDER 3MM SHORT M6132/3.2		
357-00010-03	FIX PUSH ON SFO 2938		
365-00100-20	LABEL WHITE S/A 28X11MM QUIKSTIK RW718/4		
400-00020-07	SLEEVING 2MM SIL RUBBER		
429-20000-05	T2000 SERIES II INSTALLATION GUIDE		
459-20300-02	T2030/T2035 SERIES II USERS GUIDE		
<b>T2035 VARIANT PARTS</b>			
201-00030-10	WIRE #1 T/C WIRE 7/0.2MM PVC BLACK		
205-00010-12	CABLE FLAT RBBN 16 CORE 16/7/0.1 GREY		
304-07037-00	LIGHT SPREADER A4M2533 KNOB T2000 FM1/TR1		
349-00020-30	SCREW TAPTITE M3X6MM PAN POZI BZ		
<b>T2035 EMC VARIANT PARTS</b>			
205-00010-16	CABLE FLAT RBBN 25 CORE 28 AWG GREY		
240-00010-91	CONN MALE ON WIRE 18WAY MICROMATCH		
369-00020-30	TAPE VINYLFOAM 2 SIDE S/A 24*1.5MM INSEAL 51		
X2EF01	EMC FILTER PCB ASSEMBLY T2020 T2035 T2040 T2050		



T2035 Control Head PCB (IPN 220-01322-03) - Bottom Side



T2035 Control Head PCB (IPN 220-01322-03) - Top Side



